

## PALMS 21

4 Beds 2 Baths 1 Car 2

This home is a masterclass in how to stretch your space so your crew can stretch out in style.

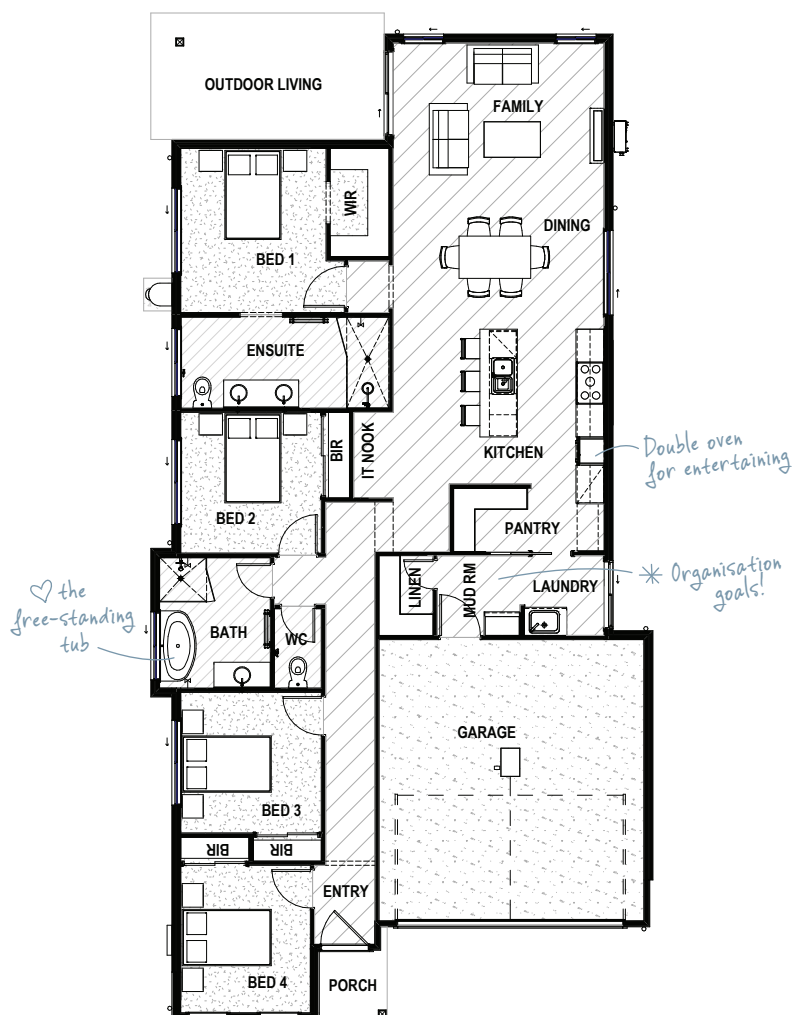
Clever features are tucked away in every direction, from the family-friendly IT nook, to the generous walk-in pantry and life-changing mud room.

### HOME DIMENSIONS

Bedroom 1	3.1 x 3.5m
Bedroom 2	3.0 x 3.0m
Bedroom 3	3.0 x 3.0m
Bedroom 4	2.8 x 3.2m
Family	4.5 x 3.1m
Dining	4.5 x 3.1m
Outdoor Living	5.0 x 2.7m
Double Garage	5.7 x 6.0m
House width <sup>^</sup>	10.6m
House length <sup>^</sup>	21.0m

**TOTAL FLOOR AREA** 198.1m<sup>2</sup>  
(incl. Outdoor Living)

<sup>^</sup>measured external wall to external wall



DRHomes.com.au Call 07 3801 1328 Email sales@drhomes.com.au

**DRHomes**  
the home team advantage™

Floorplan has been prepared for illustrative purposes and should be used as a guide only. Plans are not to scale and all images, renders, and inclusions shown are indicative only. © DRHomes Pty Ltd. QBCC Licence No. 1165013